



**Helen Pashgian**  
*Untitled (GR9)*  
2016

Formed acrylic  
12 x 18.25 x 13 inches



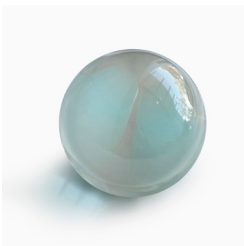
**Fred Eversley**  
*Untitled (Parabolic Lens)*  
(1974) 2020

Cast Polyester  
19 3/8 x 19 3/8 x 6 1/8 inches



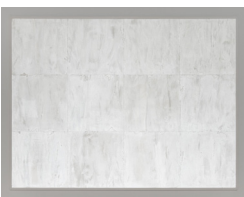
**De Wain Valentine**  
*Column Mauve*  
1968

Cast Polyester Resin  
72 x 23.5 x 18 inches



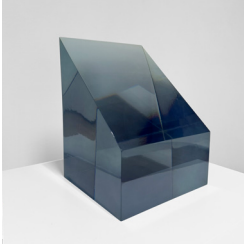
**Helen Pashgian**  
*Untitled*  
2009-2011

Cast Epoxy with Insert  
6 inches diameter



**Mary Corse**  
*Untitled*  
1986

Glass Microbeads in Oil on Canvas  
78 x 102 inches



**Peter Alexander**  
*Untitled*  
1968

Cast Polyester Resin  
12.5 x 8.75 x 8.75 inches



**Craig Kauffman**  
*Mabolo*  
2008

Acrylic Lacquer on Vacuum Formed Plastic  
23.75 x 25.75 x 9.5 inches



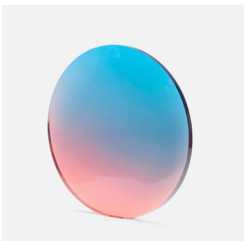
**Mary Corse**  
*Untitled*  
2000

Glass Microspheres in Acrylic on Canvas  
24 x 24 x 2 inches



**Larry Bell**  
*3D VD 11/24/14 A*  
2014

7mm Polyester and Film coated with  
Aluminum and Silicon Monoxide  
36 x 16 x 16 inches



**De Wain Valentine**  
*Untitled (Circle)*  
c. 1975

Cast Polyester Resin  
34.5 x 2.25 inches



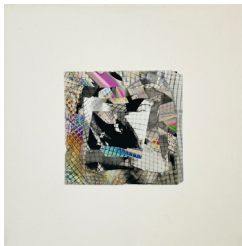
**Peter Alexander**  
*Purple Puff (2/6/14)*  
2014

Urethane  
42 x 42 inches



**Peter Alexander**  
*Rose Wedge*  
2011

Polyester Resin  
9 x 4.25 x 10 inches



**Larry Bell**  
*SMS #108*  
1991

Aluminum and Silicon Monoxide on Canvas  
30 x 30 inches



**Peter Alexander**  
*Untitled*  
1968

Cast Polyester Resin  
8 x 8 x 5.25 inches



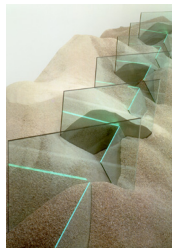
**Mary Corse**  
*Untitled (White, Black, Black)*  
2001

Glass Microspheres in Acrylic on Paper  
15 x 26.25 inches



**Larry Bell**  
*Elin 63*  
1982

Aluminium and Silicon Monoxide on  
Stonehenge Paper with a Stonehenge Insert  
53 4/5 x 35 1/2 inches



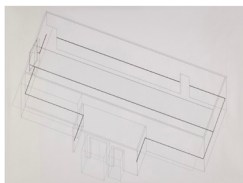
**Laddie John Dill**  
*Untitled*  
1971

Sand, Argon Light, Plate Glass  
Variable Dimensions (Site-Specific Installation)



**Robert Irwin**  
*3 x 4' - Four Fold*  
2009-2010

Light + Shadow + Reflection + Color  
48 x 16.5 x 4.25 inches



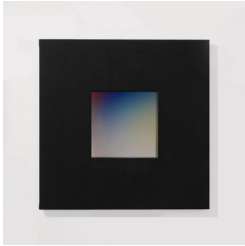
**Robert Irwin**  
*Untitled (Drawing for Scrim  
Veil - Black Rectangle - Natural  
Light Installation at the Whitney  
Museum)*  
1977

Ink on Vellum  
30 x 40 inches



**Doug Wheeler**  
*PS1 76 77 DW RM*  
1976

Graphite and Colored Pencil Drawing on  
Frosted Acetate  
24 x 36 inches



**Larry Bell**  
*SMBKW DEN #6*  
c. 1993

Mirrored Glass Coated with Inconel and Silicon  
Monoxide, Fabric  
30 x 30 x 5 inches



**James Turrell**  
*Untitled (XIV E)*  
2005

Hologram and Glass Construction  
23 x 15.75 inches



**Fred Eversley**  
*Untitled (Parabolic Lens)*  
2018

Cast Polyester  
5 x 21 5/8 x 21 5/8 inches



**Peter Alexander**  
*Blue Leaner*  
1970

Cast Polyester Resin  
94 x 4 1/8 x 2 1/4 inches



**Helen Pashgian**  
*Untitled*  
1988

Epoxy on Canvas on Panel  
18 x 18 inches



**Larry Bell**  
*Untitled*  
c. 1993

Glass Coated with Inconel and Silicon  
Monoxide  
8 x 8 x 8 inches



**Larry Bell**  
*Untitled (Corner Lamp)*  
1980

Beveled Glass Coated with Inconel and  
Silicon Monoxide  
18 x 18 inches



**Mary Corse**  
*Untitled (Yellow Arch)*  
2000

Glass Microspheres in Acrylic on paper  
18 x 24 inches